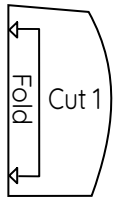


Barbie Ball Gown Pattern

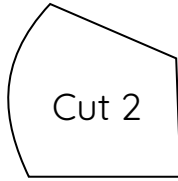


Ball Gown Top

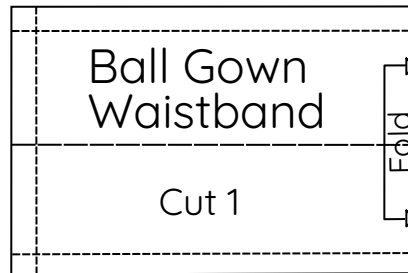
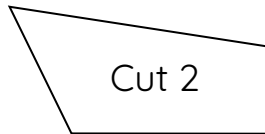
Front
centre



Front
side



Back



Underskirt (not to scale)

Tier 1
6 x 20 cm
2 1/2" x 8"

Tier 2
7 x 80 cm
2 3/4" x 31 1/2"

Tier 3
7.5 x 320 cm
3" x 10' 4"

1"

Ball Gown Skirt

Cut 10 without tab
Cut 2 with tab - 1 reversed