



# Aesca

## FAIRY DOLL PATTERN





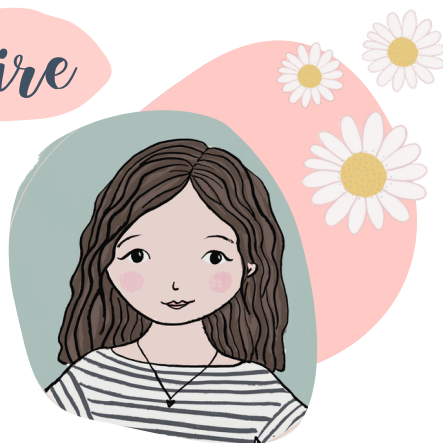
# Hello!

Welcome to the universe of Galaxia Dolls, where dolls are handmade with love, by you. Keep your doll or gift to someone special. Aesca is a magical earth fairy from Sussex who helps Galaxia teach people to sew.

The pattern has all of the information and instructions you need to make Aesca, including how to embroider her features and make her hair using yarn.

I hope you enjoy making her and finding her a loving new home with someone special.

Claire



# WHAT YOU NEED



## Tools

- Sewing machine (or can be hand-sewn)
- Needles (general sewing and embroidery needle)
- Small embroidery hoop (10 cm/4")
- Pins
- Fabric scissors
- Paper scissors
- Fabric marker (fine point, disappearing ink) or white fabric pencil if using a darker fabrics
- Fray check/stop liquid (optional but helpful for stopping seams fraying)
- Ruler
- Computer with printer and A4 paper
- Stuffing tool—e.g. wrong end of a small paintbrush, or chopstick
- Fabric glue (hi-tack)
- Pink pencil crayon or pastel for adding blush to cheeks
- Locking forceps (optional but helpful for turning arms and legs right side out)

## Materials

- Plain cotton or linen fabric in your choice of skin colour (approx. 1 x fat quarter or 40 cm length)
- Floral cotton lawn for the dress and shoes (approx. 20 x 30 cm/ 8" x 12") (e.g. Liberty Tana Lawn) or similar lightweight cotton/ polycotton fabric
- Soft tulle to coordinate with dress fabric (approx. 20 x 30 cm/ 8" x 12")
- White cotton, plain or subtle patterned fabric for wings (approx. 19 x 8 cm / 7 1/2 x 3 1/4")
- Felt for wings 19 x 8 cm / 7 1/2 x 3 1/4") (colour to coordinate with dress)
- White lace trim 0.7 cm/ 1/4" wide (approx. 13 cm / 5 1/4" length)
- Ribbon to coordinate with dress fabric 1.03 cm / 1/2" wide (approx. 30 cm/ 12" length)
- 1 x white pipe-cleaner for antenna
- 2 small white pom-poms for shoe decoration (or could use bows or tiny buttons)
- 1 x small snap (press stud)
- Thread to match fabrics
- Toy stuffing
- 1 ball wool for hair
- Cotton wadding or extra felt for inside wings (approx. 19 x 8 cm / 7 1/2 x 3 1/4")

### Cotton embroidery thread:

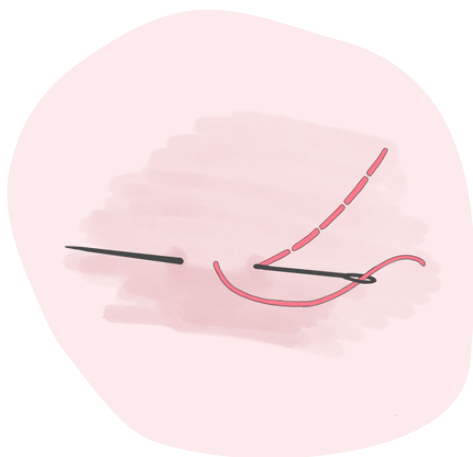
- Eye colour (you choose!)
- Black (for pupils, eyelashes & eyebrows)
- Pink or red (for lips)
- White (for white of eyes and highlight)



# STITCH GUIDE & STUFFING TIPS

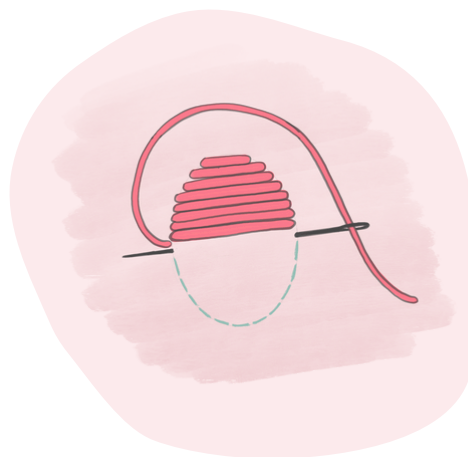


## Backstitch



Make a small backward stitch, and bring the needle through to the right side again, in front of the stitch you just made. Make another backward stitch, inserting the needle at the point where the first stitch stops. Keep stitches even.

## Satin stitch



Work straight stitches against each other to fill an area. Keep stitches fairly short and uniform.

## Ladder stitch



Ladder stitch is a hidden stitch used to close openings after stuffing. Work with double thread from right to left. Make sure the seam allowance of the opening is folded in and pressed. Pin the opening closed. Insert needle inside the opening where the machine stitching ends. Take a small horizontal stitch on one side and then a small horizontal stitch on the other side. When tightened, the gap will be closed.

## Stuffing tips

The doll head and neck both need stuffing firmly. Use small pieces of stuffing and press them firmly into the seams - this helps to create smooth curves. Make sure the neck is very firmly stuffed so it can support the head. To stuff the hands - start with a tiny piece and stuff into the thumb area. Fill the hands firmly with small pieces before the rest of the arm. Use the same technique for the legs.



# HOW TO MAKE YOUR AESCA DOLL

## Preparing for sewing your doll

Print the doll pattern, making sure your printer is set to 100% (i.e. no scaling). Check that the 1" box at the bottom of the pattern page is the correct size. Stick the page to some thin cardboard with glue (a cereal packet works well). Cut out the pattern pieces.

Press your fabric. Fold your doll skin fabric (right sides together) and place the pattern pieces for the head, body, arms and legs on top. The grain-line arrows should be parallel to the selvage edge of your fabric. Make sure there is approximately a 2 cm / 1" gap between each of the pattern pieces (as shown on Fig.01).

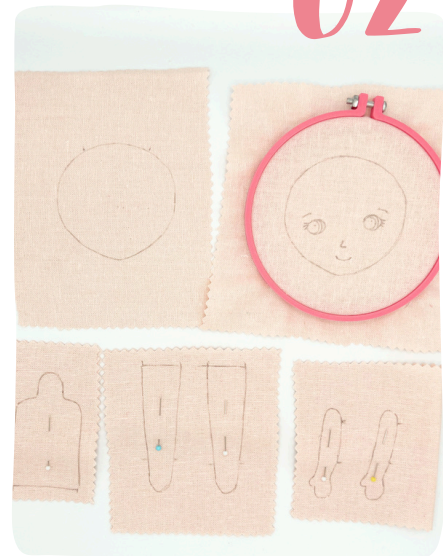
Trace around each pattern piece using your fabric marker or pencil. Trace the legs and arms twice. Transfer the markings from the pattern so you know where to leave the fabric open. Add markings for the facial features on the right side of one head piece (Fig.02) (see Star Tip for darker fabric colours).

Cut the fabric so each body part/ pair of arms/ legs is separate (**do not cut on the lines** - this is where you will stitch). Leave enough fabric around the head to fit into your embroidery hoop. Hold the pieces together with a couple of pins in the centres (Fig.02).

01



02



If you can't see through the fabric to mark the facial features, print the pattern page again. Stick the pattern to a sunny window and tape the fabric on top and trace.

STAR TIP



## Embroidering the face

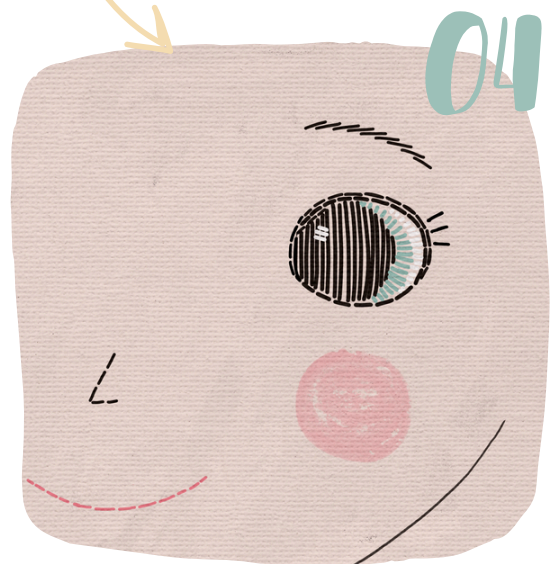
All of the embroidery is using 2 strands of embroidery thread. Secure head fabric with the facial features into an embroidery hoop and tighten the hoop (Fig.03).

Fig. 04 illustrates how to embroider the face:

- Using backstitch sew the eyebrows and nose in black thread.
- Using backstitch outline the eyes and add eyelashes with black thread.
- Fill the pupils with black thread using satin stitch.
- Use satin stitch to fill in the irises in your chosen eye colour and the whites of the eye, in white.
- Add highlights with a couple of stitches in white on each pupil.
- Stitch a smile using pink thread and backstitch.

Add some blush to cheeks with a pink pencil crayon or pastel (apply to some scrap fabric then rub onto the face).

Fig. 05 shows the finished face.



Give your doll a unique character, expression and personality by playing around with the shape, size and position of different facial features.

**STAR TIP**



## Sewing the arms and legs

Using a small straight stitch on your sewing machine, starting at an opening, stitch all around the traced markings for each arm and leg piece – remembering to stop and leave an opening where indicated on the pattern (Fig.06).

Trim around the seam, so there is only 0.5 cm / 1/4" of fabric. Clip the corners (by cutting little triangles out).

Next, turn the arms and legs right side out, using your chosen turning tool to help push out the ends. Press if looking crumpled.

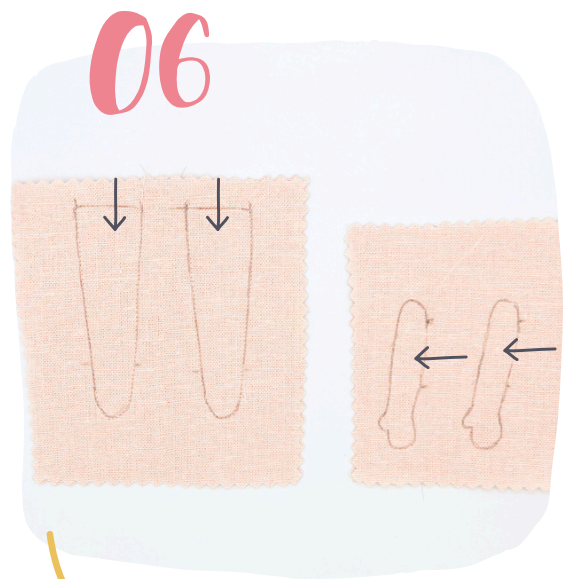
Stuff firmly with toy stuffing. Then use ladder stitch to close the opening on the arms. Leave the legs open at the top.


## Sewing the body and head

Stitch all around the body from the edge of the opening, stopping at the other side of the opening (where the legs will be attached) (Fig.07 right image) .

Stitch around the head pieces, leaving a gap as indicated on the pattern (Fig.07 left image). Trim the seams to about 0.5 cm / 1/4" and clip around the curved edges of the neck and around the head.

Turn both body and head pieces right side out and stuff. Once stuffed, leave the bottom of the body and top of the head open (Fig. 08).



 To stitch around corners, go very slowly and stop when the needle is in the fabric—then lift the foot and turn the fabric. Repeat around tight corners.



**STAR TIP**

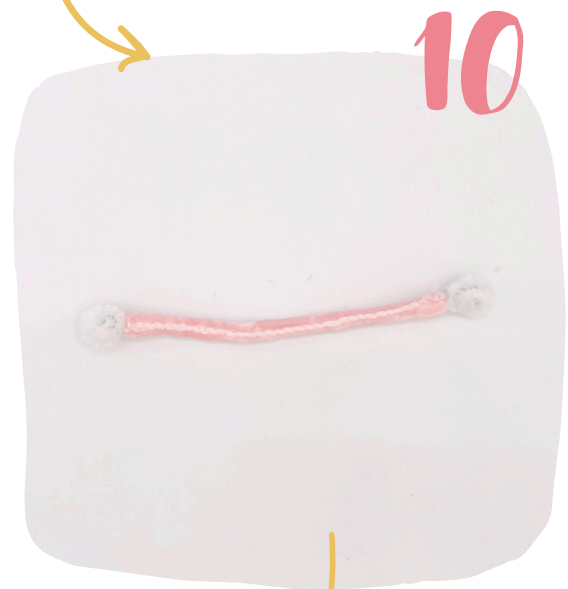
## Sewing the antenna

Cut a 18 cm / 7 " length of pipe-cleaner. Twist each end into a tight coil to make two balls, stopping when you have 8 cm / 3 1/4" left in between the balls (Fig.09).

Cut a 10 cm / 4" length of ribbon. Fold each raw end in. Then wrap the pipe-cleaner in the ribbon length-wise. Sew along the length of the ribbon by hand (using over-sewing/ whip stitch) (Fig. 10).

Next, shape the antenna into an arch. Place them inside the opening in the head, making sure the raw edges of the head are tucked in (Fig. 11).

Then use ladder stitch to close the opening on the head, with a few extra stitches from front to back through each of the antenna (Fig. 12).





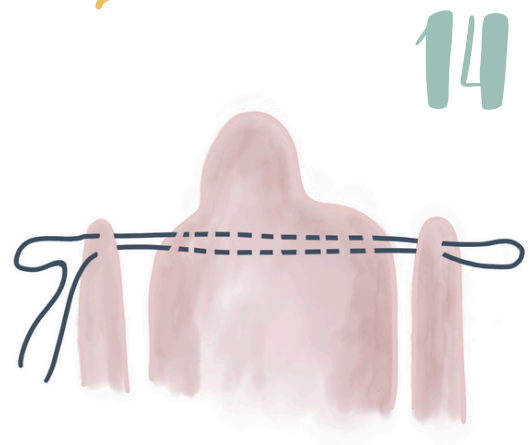
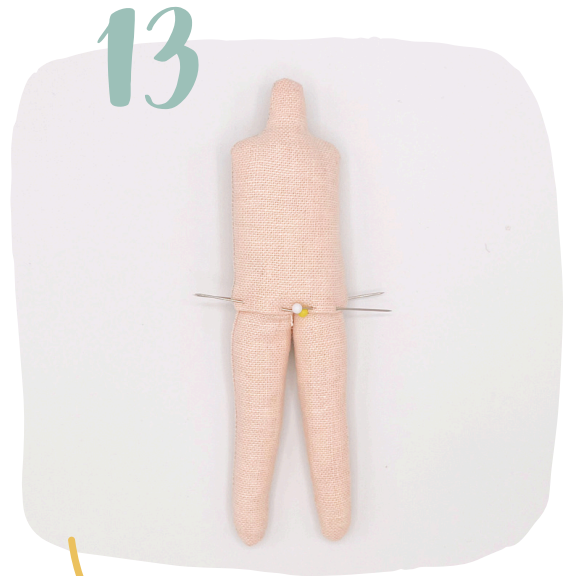
## Sewing the doll together

Fold under the base of the body and secure with a couple of stitches in the centre. Place the legs either side and pin in place (Fig.13). Using double thread or strong thread, hand sew the legs to the body along one side, then the other side. Make sure the legs stay the same length as you sew!

Pin the arms in place, making sure thumbs are facing forward.

Use a long double thread and long needle to sew through the body and both arms at each shoulder (Fig.14). Repeat a number of times so the arms are secure (Fig.15).

Pin the head in place on the neck - see Fig. 16 for positioning. Sew around the neck, front and back, using strong thread or double thread to securely attach the head. I usually sew around a couple of times to make it really secure.



## Sewing the hair

**For all hairstyles:** Wrap wool around cardboard cut to the right finished hair length, or you can use a notebook, plastic lid or book if you have something the right size (Fig.17)

### **For hairstyles with a fringe:**

To make a fringe, cut strands of wool approx. 6 cm/ 2 1/2" long. Fold the strands in half and sew them onto the head, along the top seam, using three strands at a time. Stitch the fringe to the head about 0.5 cm/ 1/4 " in front of the top seam to secure.

Cut further strands of wool about 20 cm/ 8" long (for longer hair make the strands longer). Fold the strands in half and sew onto the head, starting at the top seam, using three strands at a time. Then sew a second row of hair about 1.5 cm/ 1/2" beneath, on the back of the head. Tie in bunches to keep the hair tidy (Fig.18).

Trim the fringe and back of the hair to the desired length and style (Fig. 19 shows fairy with fringe but no antenna)

### **For long hair with a middle part:**

Cut strands 30 cm/ 12" long. Fold in half then sew them onto the head along the middle of the back of the head and along the front hairline. For 'up-do' styles, add extra hair in semi-circle around the back of head.

19



Get creative by using yarn in different colours or thickness. You can usually pick up odd balls of yarn in charity shops.



STAR TIP



## Sewing the dress

Cut out the dress pattern pieces along the solid lines. Pin the main dress piece to a single layer of fabric, with the grain-line of the pattern parallel to the selvage edge and cut out. If using, apply fray stop liquid to raw fabric edges.

Pin the first layer overskirt pattern to a single layer of tulle and cut out. Repeat with the second layer.

Hem the main dress by folding and pressing the fabric up where indicated on the pattern and stitching close to the folded edge (Fig.20).

Pin, then tack the 2 tulle overskirt layers on top of the main dress fabric (Fig. 21). Sew two rows of gathering stitches along the top of the dress.

Cut a 10.5 cm / 4 1/4" length of ribbon and seal the ends. Gather the dress to 8 cm / 3 1/4 " wide (to gather pull only the bobbin threads and gently push the fabric together) and pin to the bottom edge of the ribbon. With the right side facing up, sew along the bottom edge of the ribbon (Fig.22).

Cut a 10.5 cm/ 4 1/4" length of lace trim and sew it to the top edge of the ribbon (Fig. 23). Fold the dress in half, right sides together and sew the back seam, stopping 2 cm / 1" from the top. Turn the dress right side out. Sew a snap to either side of the ribbon.



## Sewing the wings

Cut a rectangle of white cotton wing fabric 19 x 8 cm/ 7 1/2 x 3 1/4". Repeat with felt and wadding layer (you can either use cotton quilt wadding or felt). Make a sandwich with wadding underneath, then cotton with right side facing up, then felt on top (Fig.24).

Trace the wing shape on top of the felt. Sew around the wing shape leaving an opening at the bottom as indicated by the pattern.

Cut out close to the stitching. If you have them using pinking shears works well (Fig.25). If not, then clip the corners. Turn right side out and hand sew the opening closed. Press. Sew three lines of stitching as shown on the pattern.

Fold the wings in half length-wise. Then hand sew the horizontal line shown on the pattern (B). This gives the wings some shape. Next fold them in half width-wise then sew the two darts (A) (Fig. 26).

Sew the wings to the back of your fairy doll as shown in Fig. 27.





## Sewing the shoes

Cut 2 shoes on a double layer of main fabric. Apply fray stop liquid to the raw edges. Fold over the top of each shoe piece along the dotted line shown on the pattern and press. Sew along the top of each shoe piece close to the folded edge (Fig.28).

With right sides together sew around each shoe, leaving the top open. Clip the corners then turn right side out. Fit the shoes on the doll and hand sew in place with a row of stitches across the top (Fig. 29). Glue a pom pom on each shoe to finish (Fig.30).

Use tissue paper underneath the fabric to stop your machine chewing up the little pieces. Sewing each piece in a continuous row makes it quicker.

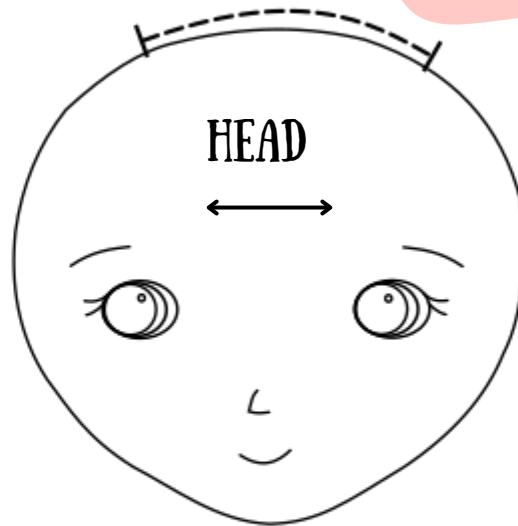
STAR TIP



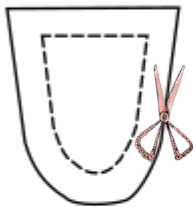
You've finished!



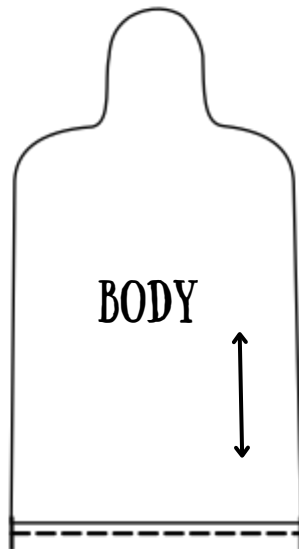
Fairy pattern pieces - see instructions



## SHOES

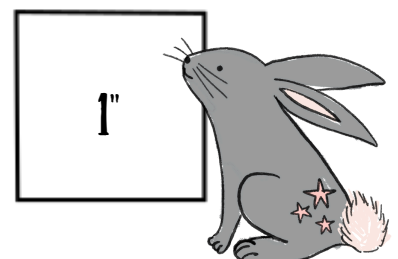
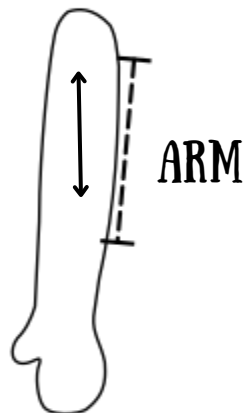
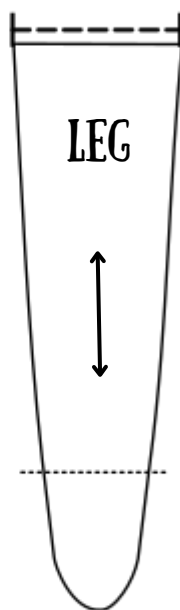


Cut 2 along solid line - double layer of floral fabric

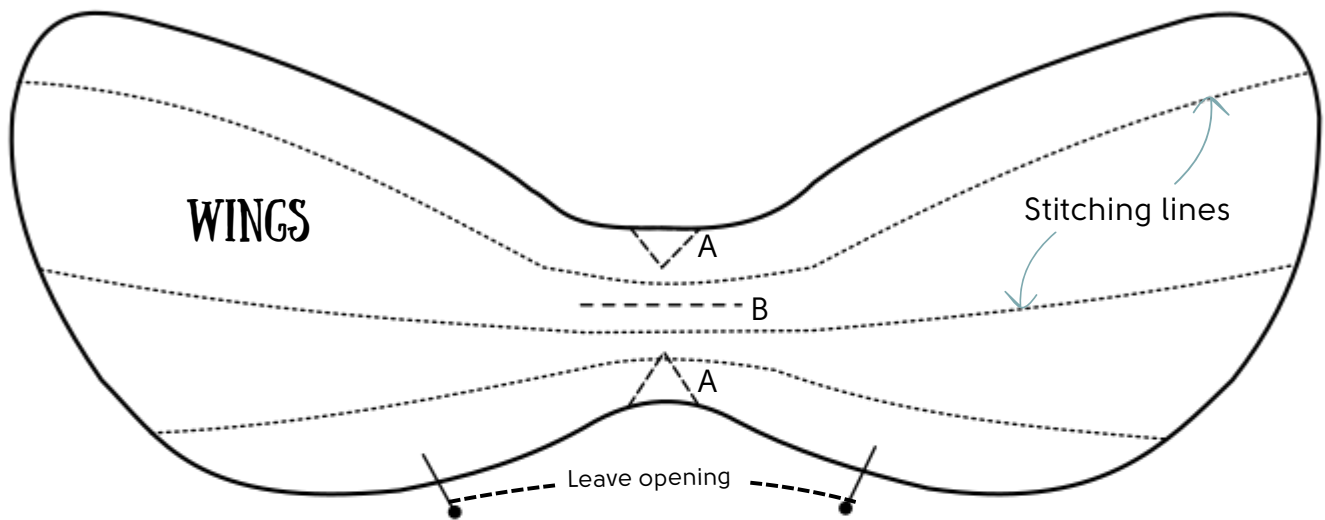


┌-----┐ = Opening

↔ = Grainline

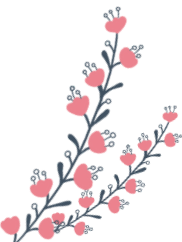
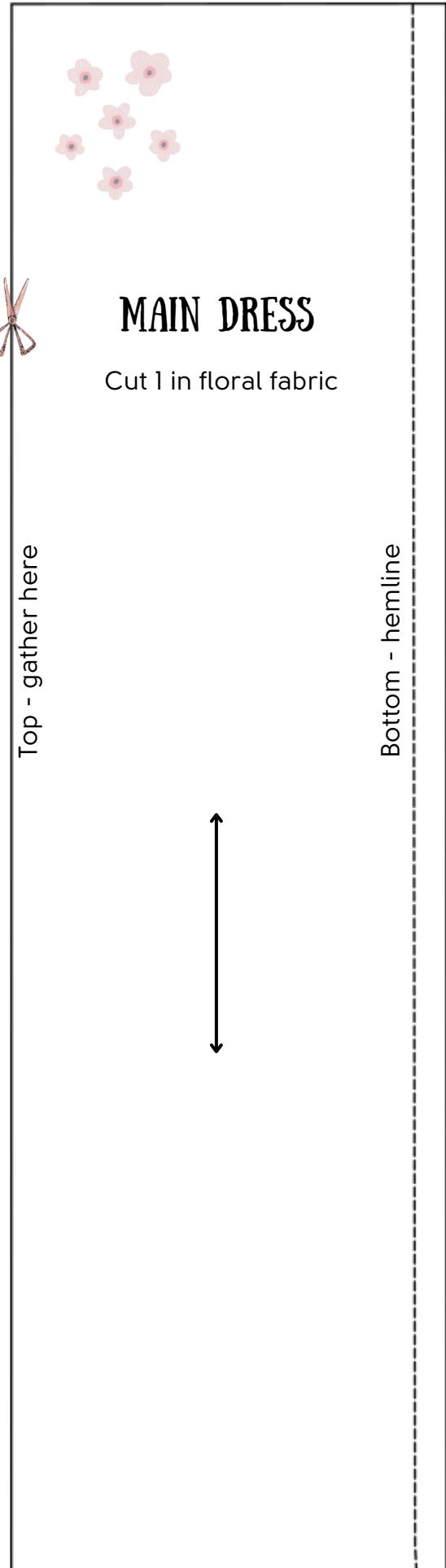
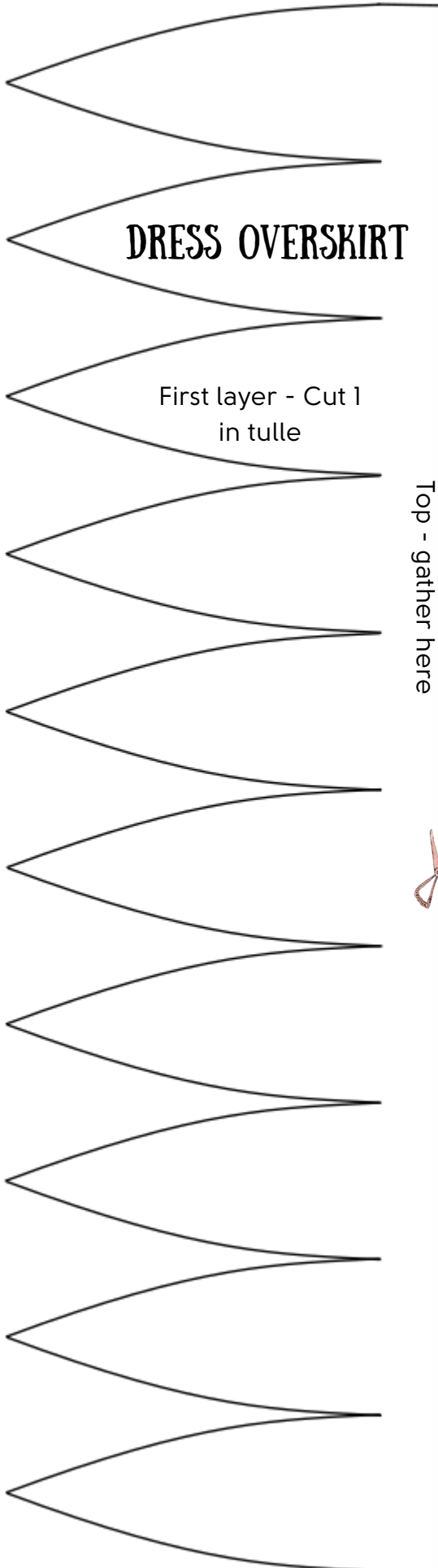


Fairy wings pattern piece -  
see instructions





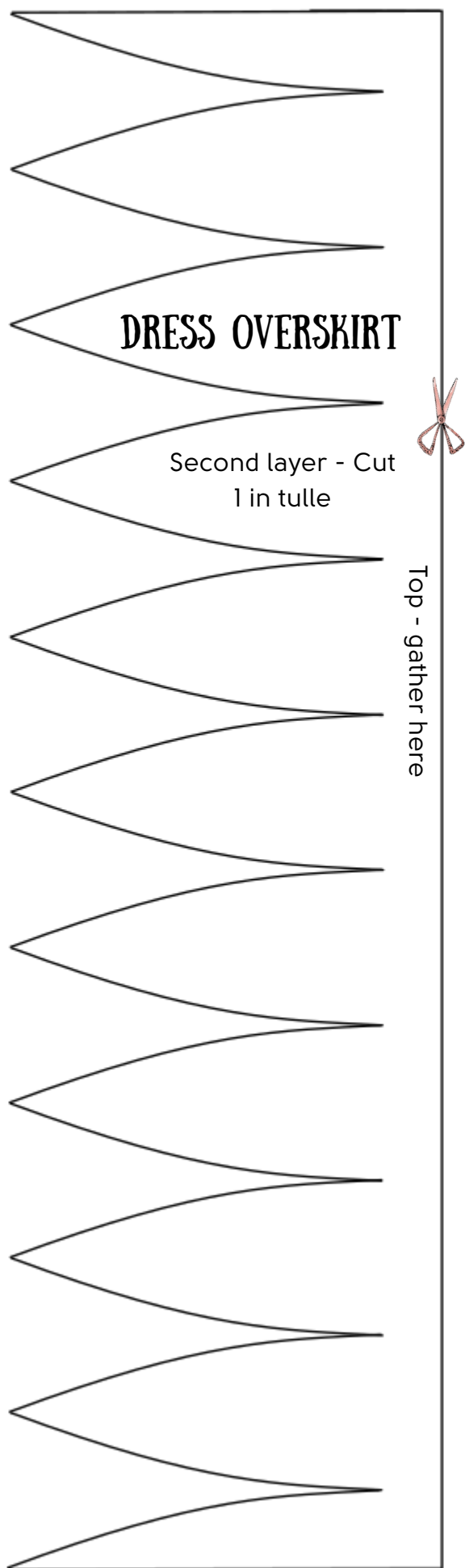
# Dress pattern pieces





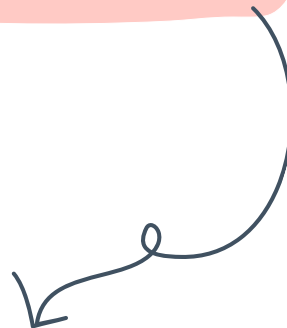


## Dress pattern pieces





for more patterns...



[WWW.GALAXIADOLLS.CO.UK](http://WWW.GALAXIADOLLS.CO.UK)